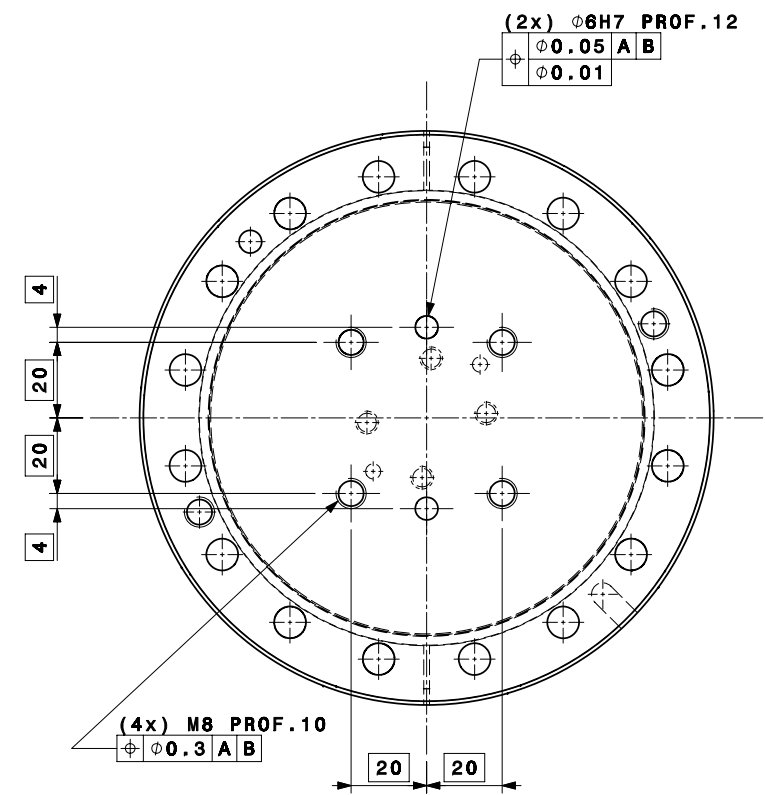
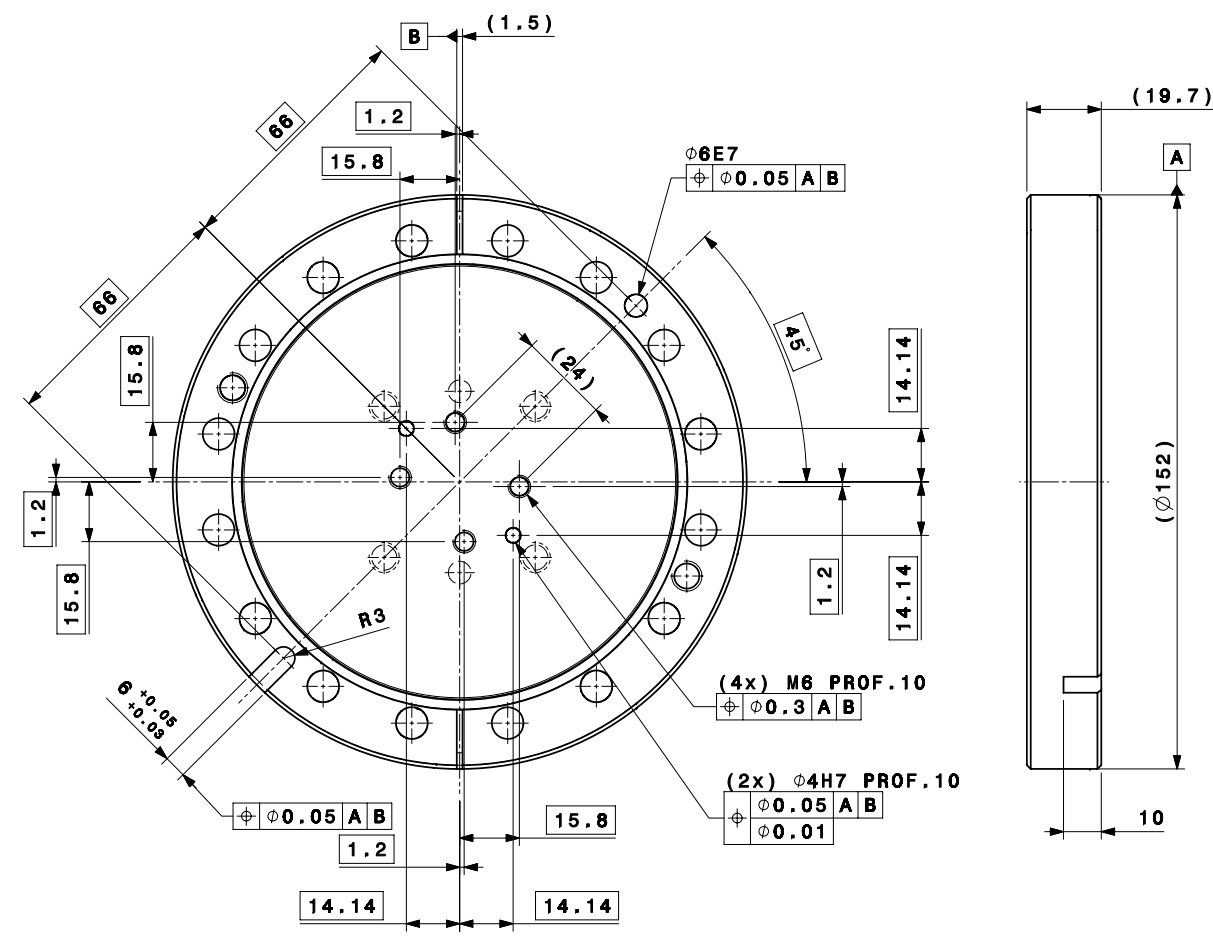


ISO 2769-mK-E
 ISO 13715 $\mu\text{M}, \text{mm}, \text{mm}$
 Tolérances géométriques, linéaires et angulaires
 TOLERANCES GENERALES "MOYENNE"
 Aretes de forme non définie

DESTINÉES AUX TOULANCES
 DESSINÉS, RIGIDITÉ, TOULANCES
 ACCORDING TO ISO STANDARDS

PROJECTION

CONSTITUANTS RESPONSABLES POUR
 EUROPEAN ORGANIZATION FOR NUCLEAR RESEARCH
 CERN
 THIS DRAWING MAY NOT BE USED FOR COMMERCIAL PURPOSES WITHOUT WRITTEN AUTHORIZATION



| 1 | UHV FLANGE_FIXED 152/100 | 1 | | STDVUH0009 | |
|-------------------------------------|--------------------------|--------------------|-------------|-------------------------|--------------------------------------|
| | BRIDE UHV_FIXE 152/100 | | | | |
| QUANT. | DESCRIPTION | POS | MAT. | OBSERVATIONS | REF. CERN |
| | ENS/ASS | CTFBIMTV0052 | S.ENS/S.ASS | | |
| CTF BEAM INSTRUMENTATION MONITOR TV | | | | ECHELLE SCALE 1:1 | DES/DRA. N. MEMMILLON-BLA 2007-02-06 |
| PARABOLIC SCREEN SUPPORT | | | | | CONTROLLED N. CHRITIN 2007-08-29 |
| SUPPORT FLANGE DN100 | | | | | RELEASED T. LEFEVRE 2007-08-30 |
| SUPPORT ECRAN PARABOLIQUE | | | | APPROVED | |
| BRIDE SUPPORT DN100 | | | | CTF\BIMTV0\CTFBIMTV0053 | |
| | | | | REPLACE/REPLACES | |
| RELEASED BY PROJECT ENGINEER | | FOR INFORMATION | | DAC - | CTFBIMTV0053 |
| | | | | | SIZE IND. 2 |