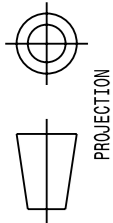
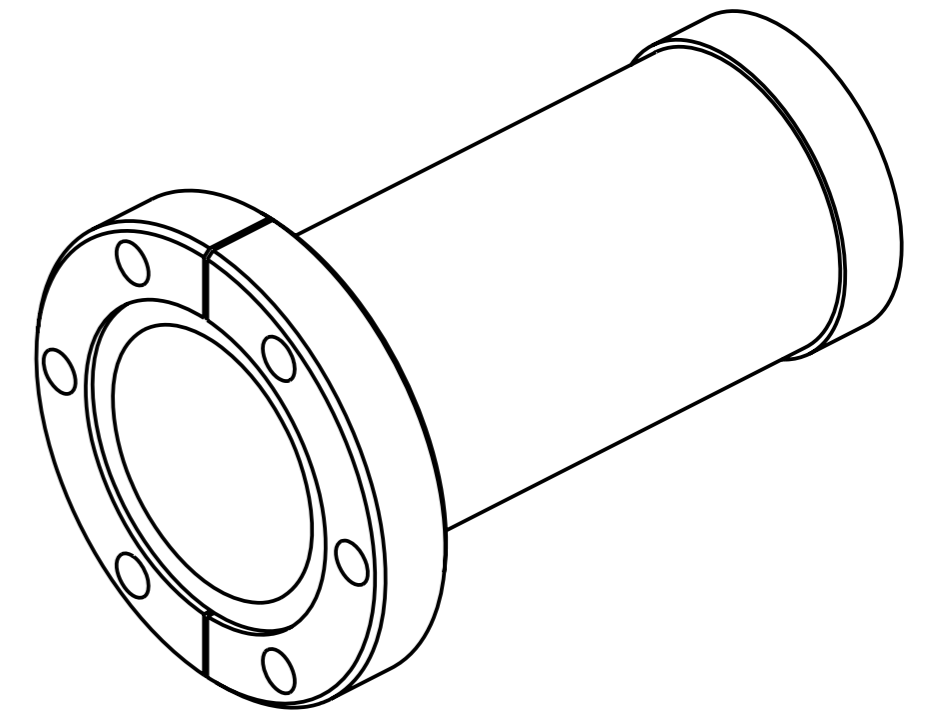
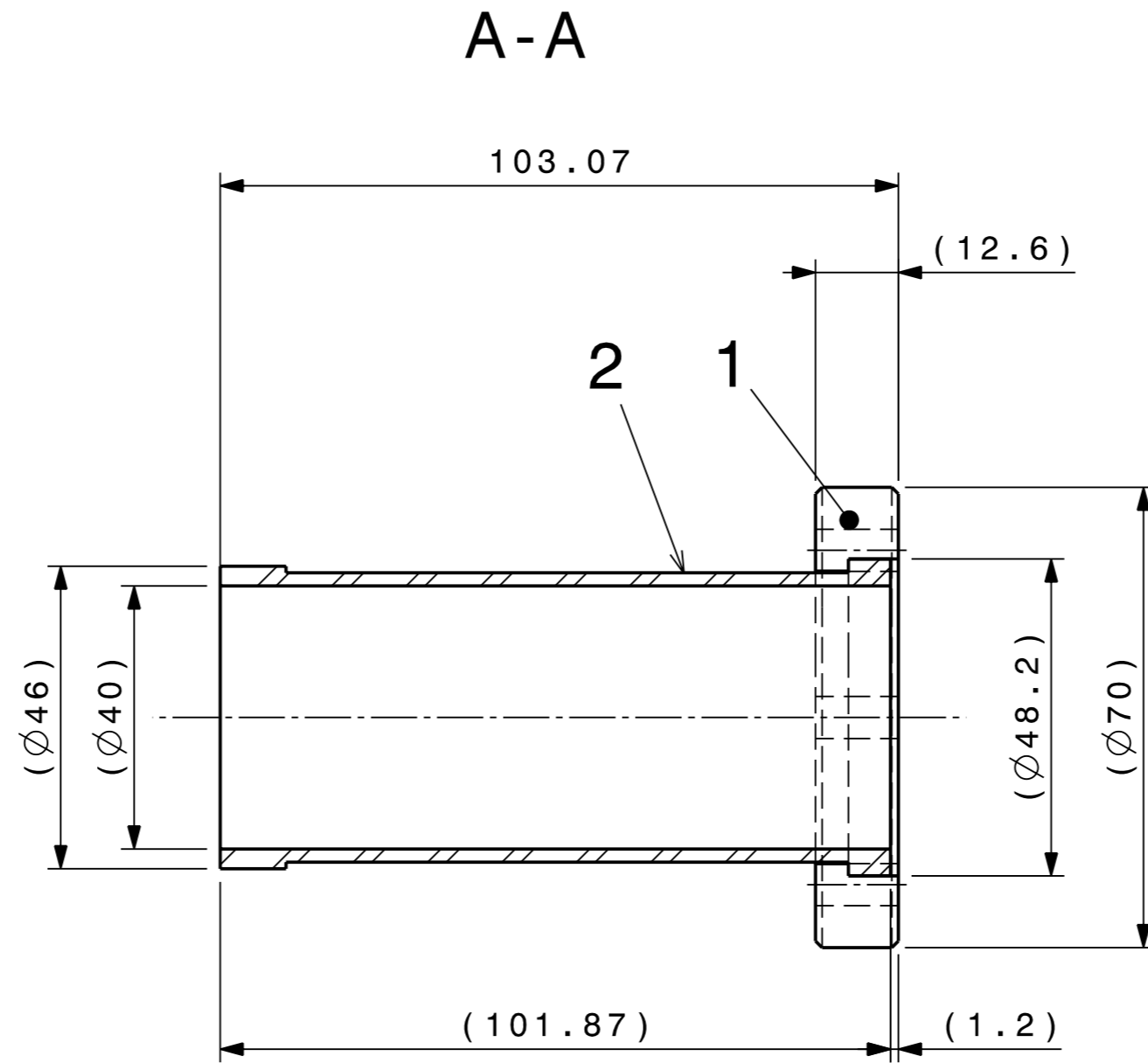
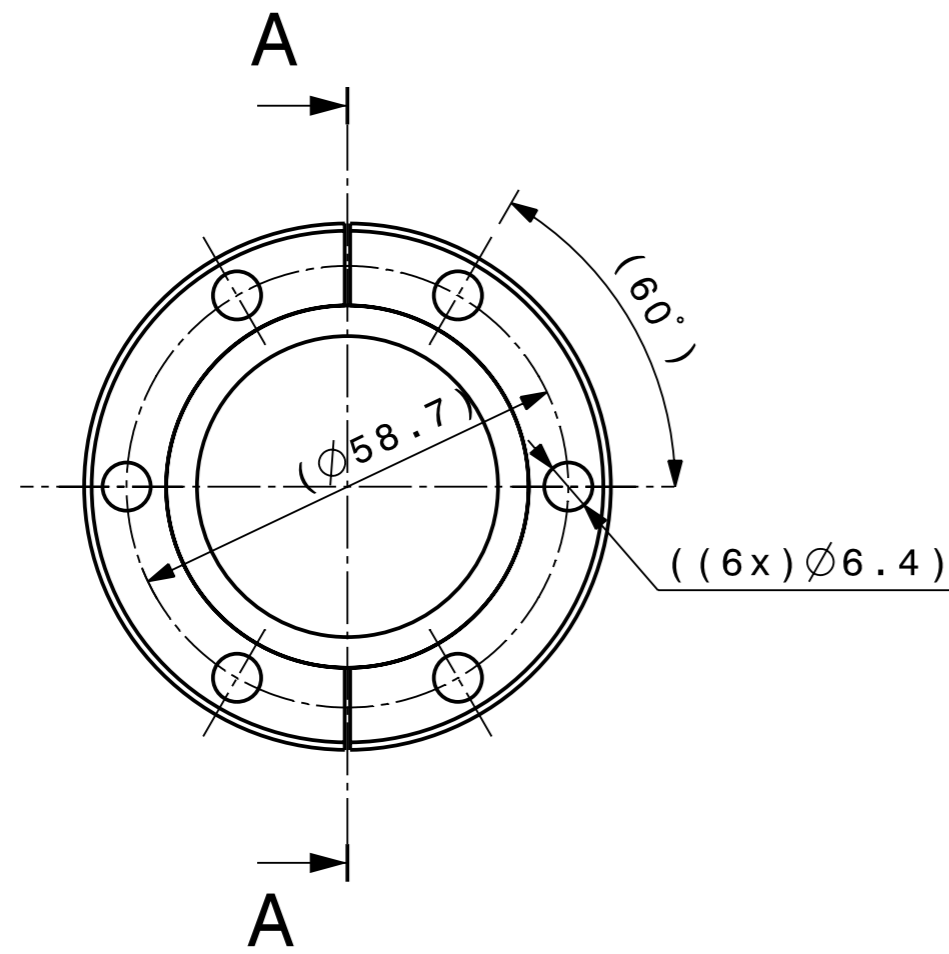


DESSIN, RUGOSITÉ, TOLERANCES  
SELON NORMES ISO  
DRAWING, RUGOSITY, TOLERANCES  
ACCORDING TO ISO STANDARDS



ORGANISATION EUROPEENNE POUR  
LA RECHERCHE NUCLEAIRE  
EUROPEAN ORGANIZATION FOR NUCLEAR RESEARCH  
GENEVE  
CE dessin ne peut être utilisé à des fins commerciales sans autorisation écrite  
This drawing may not be used for commercial purposes without written authorisation



Approximative mass : 0.147 kg  
Masse approximative

\* Full penetration  
Maximum exceeded penetration  
inside the vacuum chamber: 0.75 mm

ISO 2768-mk-E

All welds must be made using the specified techniques with 100% penetration. Welds and all other surfaces must not be finished by grinding or any other mechanical abrasion. Any part (or component) of the vacuum system showing a room temperature calculated leak rate (localized or global), when measured with a calibrated UHV leak detector, in excess of 1.0<sub>10</sub>-11 Pa.m<sup>3</sup>.s<sup>-1</sup> (1.0<sub>10</sub>-10 mbar.l.s<sup>-1</sup>) will be considered as unacceptable.

1. Component fabrication (degreasing and welding).
2. Inscribe drawing number on shaded area with an electrical pen.
3. Leak detection, the test report has to be supplied to the AT Vacuum Group.
4. UHV cleaning according to CERN report "procédure qualité": 867.11 (for Stainless steel) or 867.12 (for aluminium and copper). EDMS reference number 798034.

1	"Y(22.75°)" VACUUM CHAMBER ASSEMBLY - NOZZLE PIPE ENSEMBLE CHAMBRE A VIDE "Y(22.75°)" - TUBE EMBOUT	2		CTFMBHZ_0112	
2	DN35 HALF ROTATABLE FLANGE - FOR TUBE 3/4"44.5/40.5 DEMI BRIDE ROTATIVE DN35 - POUR TUBE 3/4"44.5/40.5	1		CTFVCTUB0171	
QUANT.	DESCRIPTION	POS	MAT.	OBSERVATIONS	REF. CERN
	ENS/ASS	CTFMBHZ_0106	S.ENS/S.ASS		
CTF3 MAGNET BENDING HORIZONTAL				ECHELLE SCALE	DES/DRA. B. FAVRAT 2007-08-17
"(22.75°)" VACUUM CHAMBER ASSEMBLY NOZZLE ENSEMBLE CHAMBRE A VIDE "(22.75°)" EMBOUT				1:1	CONTROLLED
					RELEASED
					APPROVED
				CTF\MBHZ_0\CTFMBHZ_0111	
				REPLACE/REPLACES	
NON VALABLE POUR EXECUTION NOT VALID FOR EXECUTION			QAC	CTFMBHZ_0111	SIZE IND. 2