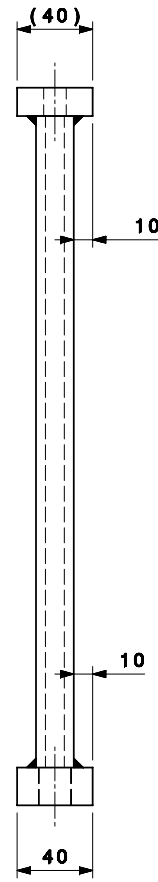
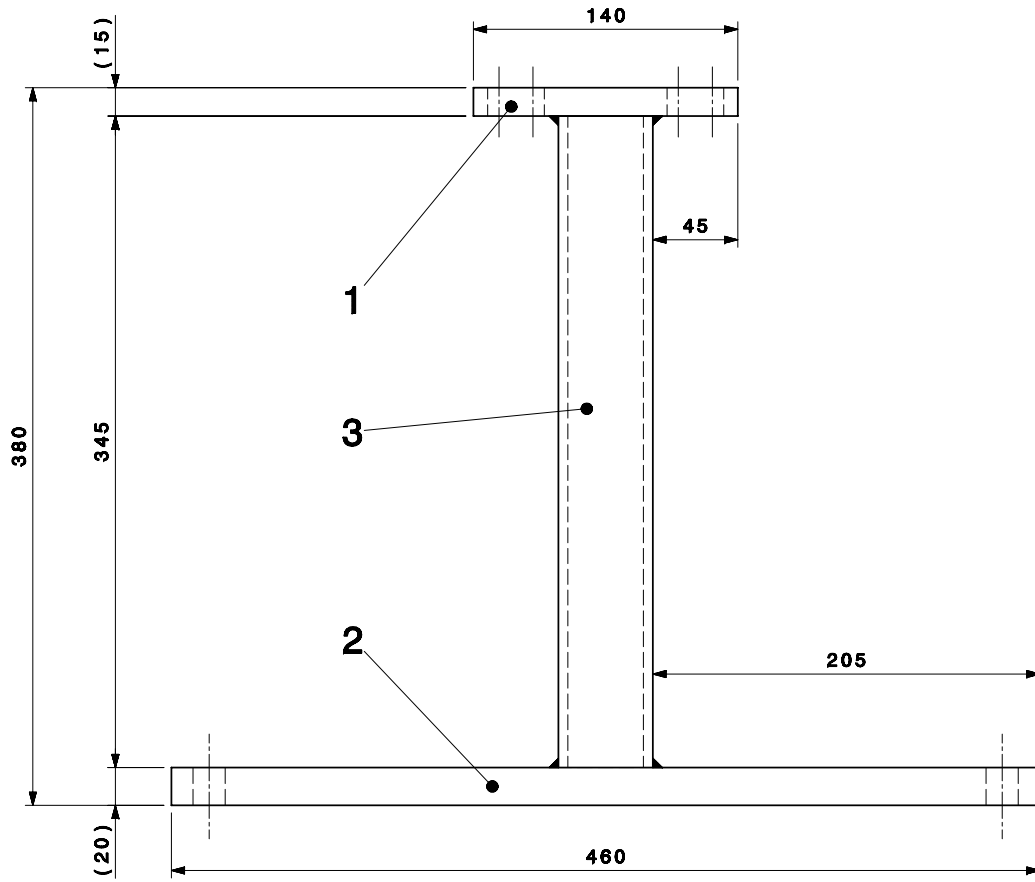
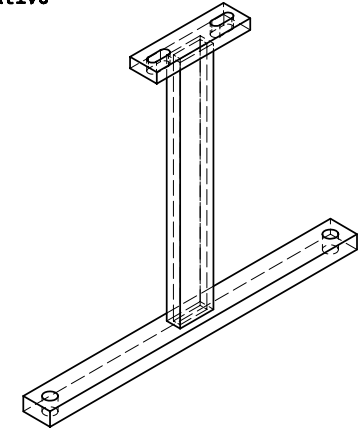


Approximative mass : 5.031 kg
Masse approximative



NOTA : WELDINGS $\sqrt{3.5}$ 111 EXCEPT INDICATIONS
CUTTING OF THE MATERIAL Ra 6.3

PAINTING: 1 COATS OF PRIMER
2 COATS OF YELLOW PAINT RAL 1021
EXCEPT MACHINING SURFACES

NOTE : SOUDURES $\sqrt{3.5}$ 111 SAUF INDICATIONS CONTRAIRES
DECOUPE DES DEBITS Ra 6.3

PEINTURE : 1 COUCHE DE PEINTURE ANTIROUILLE
2 COUCHES DE PEINTURE JAUNE RAL 1021
SAUF FACES USEINES

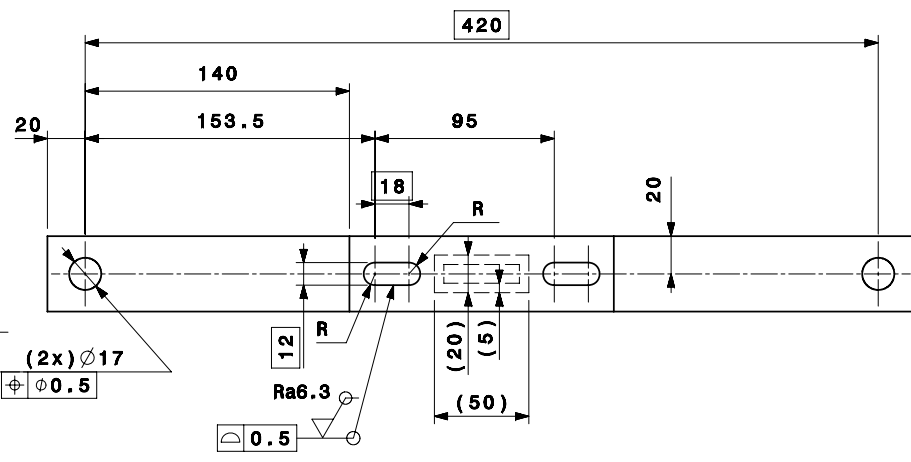
$\sqrt{Ra 6.3}$

TOLERANCES GEOMETRIQUES LIGNAIRES ET ANGULAIRES	Tolerances geometriques, lineaires et angulaires	ISO 2768-mK-E
	Arêtes de forme non definie	ISO 13715 $\sqrt{+0.5 -0.5}$ $\sqrt{+0.2 -0.2}$

DENSITE, IMPORANCE, TOLERANCES
DENSITE, IMPORANCE, TOLERANCES
DENSITE, IMPORANCE, TOLERANCES
DENSITE, IMPORANCE, TOLERANCES

PROJECTION

COMMISSION RECHERCHE POUR
L'EUROPEAN ORGANIZATION OF NUCLEAR RESEARCH
EN 6010 OR NOT CITY CELLER A 801 FOR COMMERCIAL USE INFORMATION ONLY
THIS DRAWING MAY NOT BE USED FOR COMMERCIAL PURPOSES WITHOUT WRITTEN AUTHORIZATION



QUANT.	DESCRIPTION	POS	MAT.	OBSERVATIONS	REF. CERN																								
1	RECTANG. TUBE 50 x 20 TH.5	3	S235JR	STANDARD INDUSTRY																									
1	TUBE RECTANG. 50 x 20 EP.5	3	S235JR																										
1	SHEET TH:20mm	2	STEEL	40 x 480	44.43.32																								
1	TOLE EP:20mm	2	ACIER S235JR02		020.9																								
1	Flat bar - 40 x 15 x 140	1	STEEL		44.39.02																								
1	Moplat - 40 x 15 x 140	1	ACIER S235JR		332.2																								
<table border="1"> <tr> <td>ENS/ASS</td> <td>S.ENS/S.ASS</td> <td>CTFVCTUB0221</td> </tr> <tr> <td colspan="3">CTF3 TUBULAR VACUUM CHAMBER</td> </tr> <tr> <td colspan="3">VACUUM CHAMBER SUPPORT ON GIRDER</td> </tr> <tr> <td colspan="3">PILAR</td> </tr> <tr> <td colspan="3">SUPPORT SUR POUTRE CHAMBRE A VIDE</td> </tr> <tr> <td colspan="3">PILIER</td> </tr> <tr> <td colspan="3">CTF\VTUBO\CTFVCTUB0220</td> </tr> <tr> <td colspan="3">REPLACE/REPLACES</td> </tr> </table>						ENS/ASS	S.ENS/S.ASS	CTFVCTUB0221	CTF3 TUBULAR VACUUM CHAMBER			VACUUM CHAMBER SUPPORT ON GIRDER			PILAR			SUPPORT SUR POUTRE CHAMBRE A VIDE			PILIER			CTF\VTUBO\CTFVCTUB0220			REPLACE/REPLACES		
ENS/ASS	S.ENS/S.ASS	CTFVCTUB0221																											
CTF3 TUBULAR VACUUM CHAMBER																													
VACUUM CHAMBER SUPPORT ON GIRDER																													
PILAR																													
SUPPORT SUR POUTRE CHAMBRE A VIDE																													
PILIER																													
CTF\VTUBO\CTFVCTUB0220																													
REPLACE/REPLACES																													
<table border="1"> <tr> <td>DES/DRA.</td> <td>ACROTECNA</td> <td>2007-09-21</td> </tr> <tr> <td>CONTROLLED</td> <td>B.FAVRAT</td> <td>2007-09-21</td> </tr> <tr> <td>RELEASED</td> <td>R.FUBER</td> <td>2007-10-05</td> </tr> <tr> <td>APPROVED</td> <td>-</td> <td>-</td> </tr> </table>		DES/DRA.	ACROTECNA	2007-09-21	CONTROLLED	B.FAVRAT	2007-09-21	RELEASED	R.FUBER	2007-10-05	APPROVED	-	-	<table border="1"> <tr> <td>SCALE</td> <td>1:2</td> </tr> </table>		SCALE	1:2	<table border="1"> <tr> <td>SIZE</td> <td>IND.</td> </tr> <tr> <td>2</td> <td></td> </tr> </table>		SIZE	IND.	2							
DES/DRA.	ACROTECNA	2007-09-21																											
CONTROLLED	B.FAVRAT	2007-09-21																											
RELEASED	R.FUBER	2007-10-05																											
APPROVED	-	-																											
SCALE	1:2																												
SIZE	IND.																												
2																													
<table border="1"> <tr> <td>RELEASED BY</td> <td>FOR</td> <td>DAC</td> <td></td> </tr> <tr> <td>PROJECT ENGINEER</td> <td>EXECUTION</td> <td>-</td> <td></td> </tr> </table>				RELEASED BY	FOR	DAC		PROJECT ENGINEER	EXECUTION	-		<table border="1"> <tr> <td>CTFVCTUB0220</td> <td>2</td> </tr> </table>		CTFVCTUB0220	2														
RELEASED BY	FOR	DAC																											
PROJECT ENGINEER	EXECUTION	-																											
CTFVCTUB0220	2																												