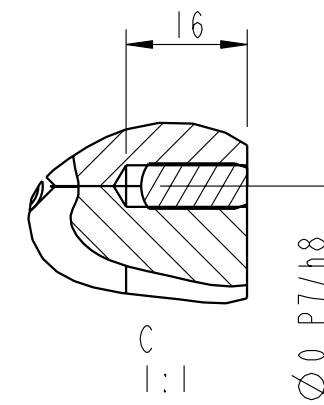
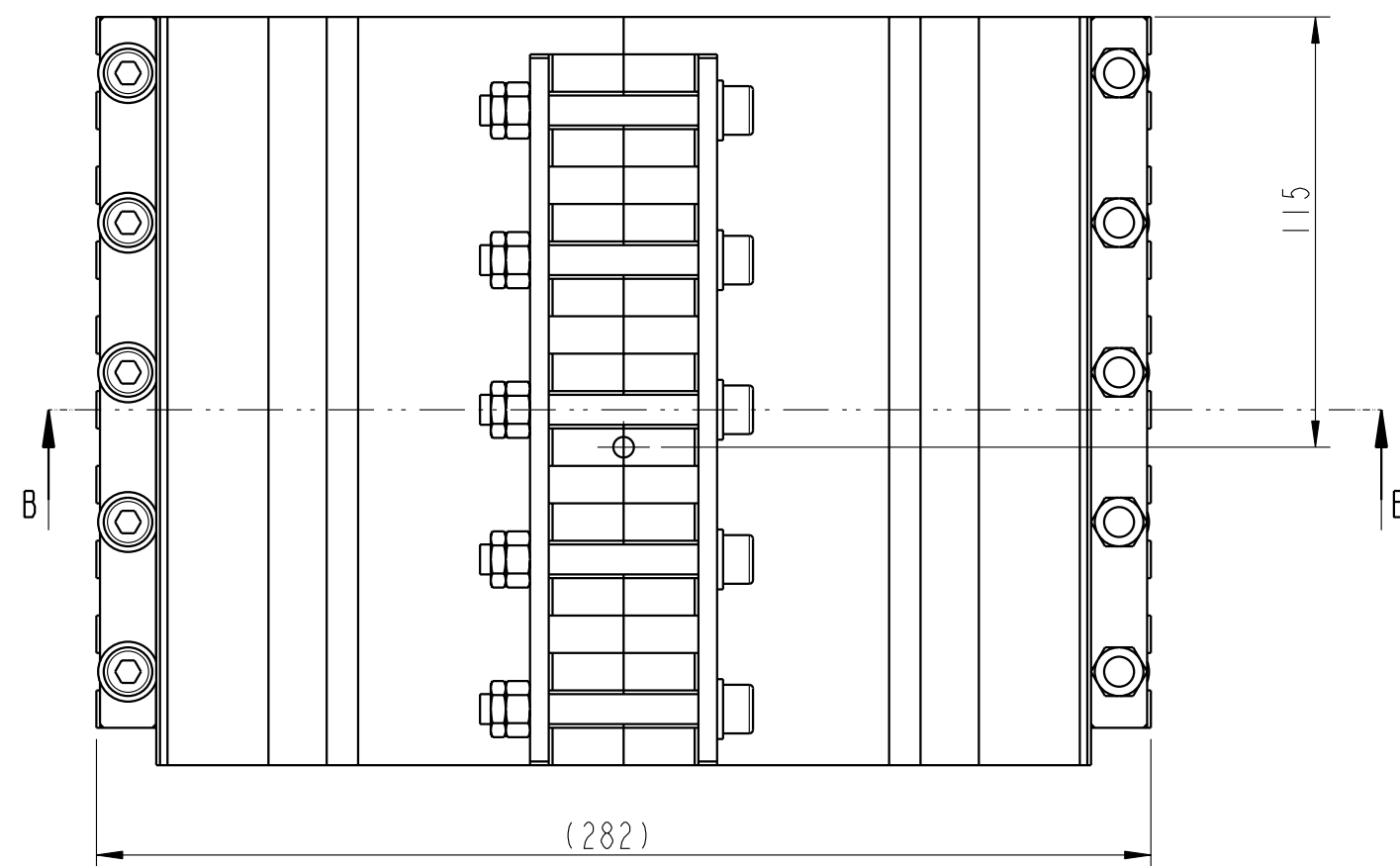
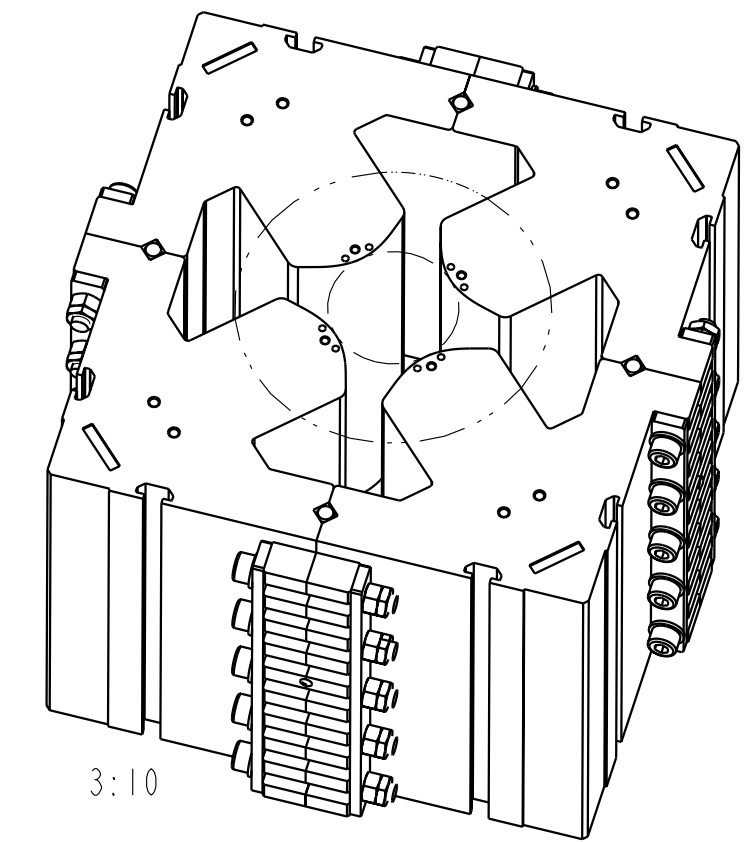
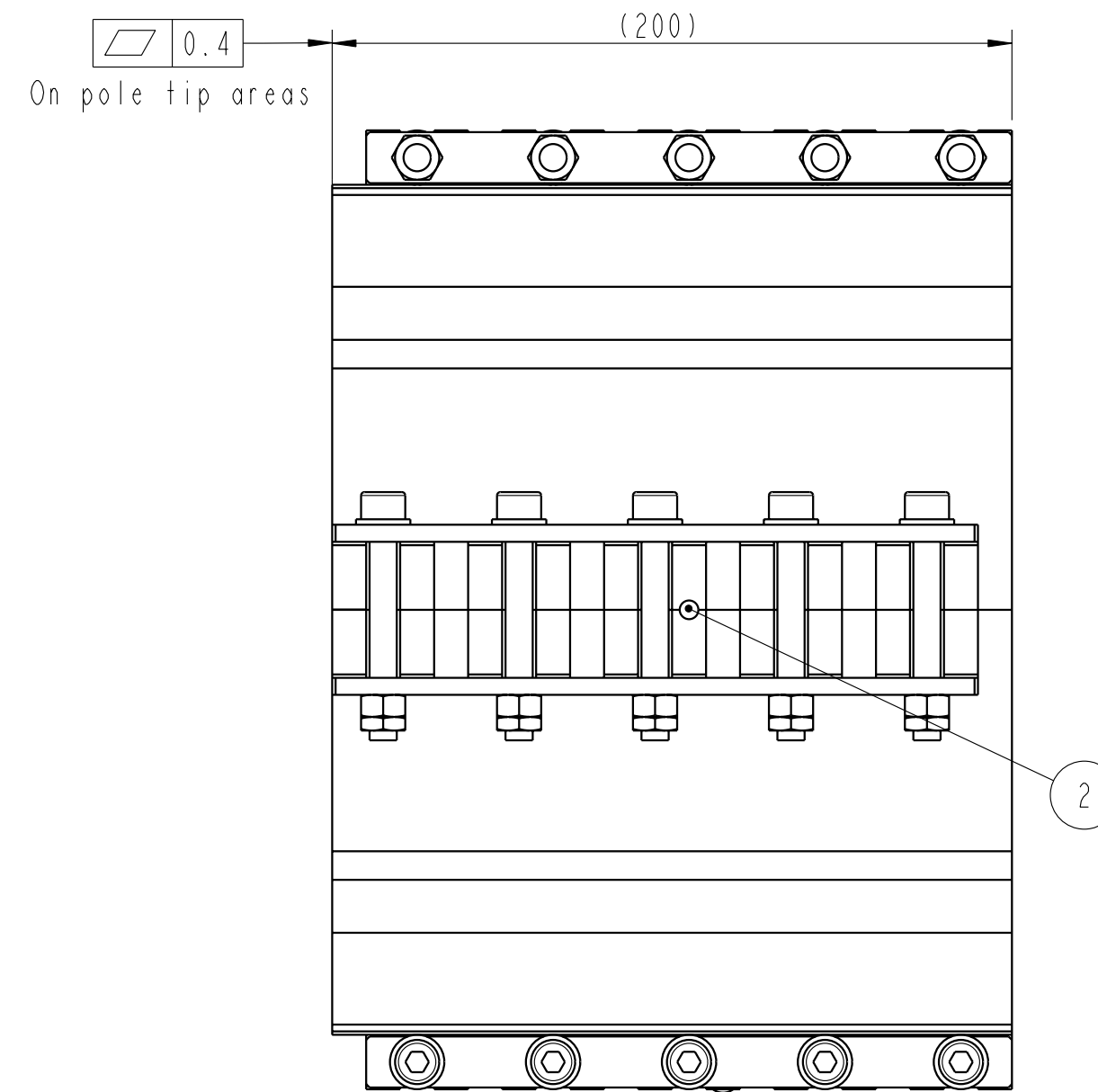
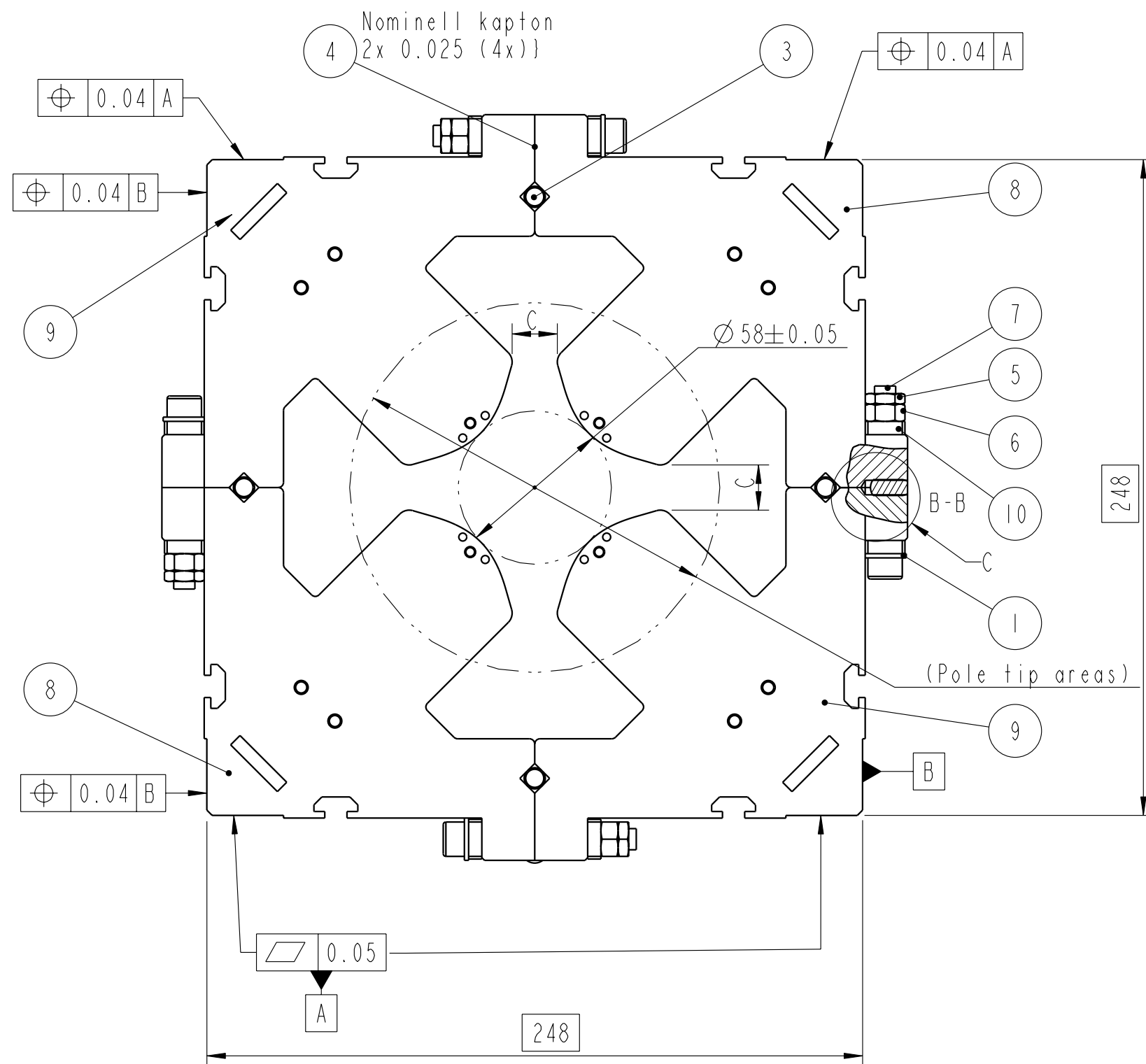


Utg.	Ändring	Datum	Införd av
1	Added pinnhole 6 H7(4x) Tolerances added	030923	ur st
2	245 changed to 248	040116	JE
3	Item 6,7 changed to 8,9: Item 11 added, Item 3 changed	040311	JE
4	Item 11 removed. (Lifting Eye Bolts)	040321	JE



Note C. Dimension to be ±0.05

Pos.	Antal	Benämning	Material	Mod/Typ/Dim	Anmärkning
10	8	CLAMP STEEL	EN 1.4301	FLAT BAR	QPMA-0510
9	2	ASSEMBLY YOKE 2	-	-	QPMA-0505
8	2	ASSEMBLY YOKE 1	-	-	QPMA-0504
7	20	SCREW	A4	mc6s-m8x65	
6	20	NUT	A4	M6M-M8	
5	20	NUT	A4	M6L-M8	
4	8	SHIM	KAPTON	0.025	
3	8	CYLINDRICAL PIN	A1	Diam 8.045 +/-0.05 L=20	
2	4	CYLINDRICAL PIN	A2	6 h8 X 14	
1	20	WASHER	A4	BRB M8	

Tolerans där ej annat angivits	ISO 2768-m	Titel IRON ASSEMBLY QUADRUPOLE QL-3 IRON ASSEMBLY	Skala 1:2	Proj. metod URST
Ytbehandling				
SCANDITRONIX MAGNET		Datum 03-09-01	Rev. 4	
		Ritn. nr	QPMA-0503	